



# Using Images from VisualDx

Medical images play an important role in educating students, residents, and even seasoned providers. The VisualDx image library has been developed through partnerships with exceptional learning institutions and providers. These contributors strongly believe in the importance of images to enhance scholarship, teaching, and learning in medicine. VisualDx shares this belief. In support of shared learning, here are guidelines for the use of images and Sympticons™ in educational and non-commercial settings.

## Permitted Uses

You may use a VisualDx image or Sympticon™ for personal clinical, educational, or research use including consulting with individual colleagues, for patient education, and personal lectures or other teaching materials. When using an image or Sympticon™ from VisualDx, leave the copyright watermark intact and include the source reference. (See examples at right.)

**For subscribing institutions:** Educational material containing images from VisualDx, including course lectures and handouts, may be added to centralized learning management systems so long as the images remain within the context of specific course material and are access controlled.

**Note:** These usage rights apply to VisualDx subscribers only and will expire once the license is terminated.

## Prohibited Uses

Unless express permission is granted, images or Sympticons™ from VisualDx may not be used for any commercial purpose, in any print or electronic publication, posted on websites, Intranet domains, public bulletin boards, or online chatrooms. Individual images from VisualDx may not be added to centralized image repositories or learning management systems outside the context of specific lectures or other course material.

## Access and Save VisualDx Images

1. Log in to VisualDx.
2. Search for the diagnosis you would like to present.
3. Click on an image to open in it in full screen.
4. Right click on the image and “Save Image As” to your computer.
5. Place the image into your presentation.
6. Include the source reference, “Image Source: VisualDx.com”.

## Including Source References

- Requirements when using a VisualDx image:
1. Leave copyright watermark intact.
  2. Include reference, “Image source: VisualDx”

Optional: URL link to image on VisualDx website. You can discover the link address by right clicking on the full size photo and selecting “copy image address.”

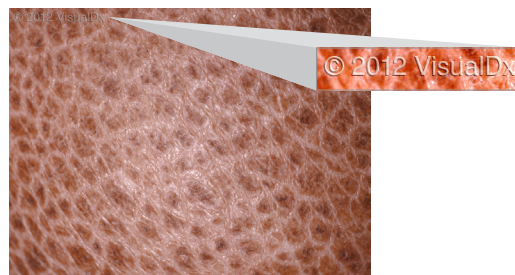
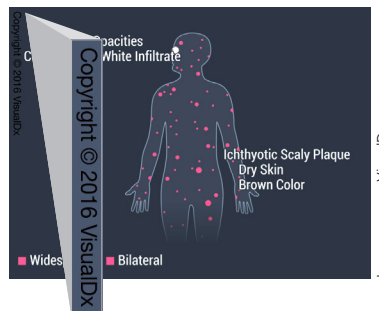


Image source: VisualDx.com



<http://www.visualdx.com/visualdx/7/getImage.do?imageSize=Large&imageId=36339&r=1077400>

## QUESTIONS OR SPECIAL REQUESTS?

Contact **Heidi Halton**,  
Image Collection Manager, at  
hhalton@visualdx.com.